

**The Safe Way
To Recover
Contraband**

DRUGLOO

THE WORLD'S LEADING EXPERT INTERNATIONAL

THE EVOLUTION UNIT

INFORMATION

Retro-fit banned substance recovery unit

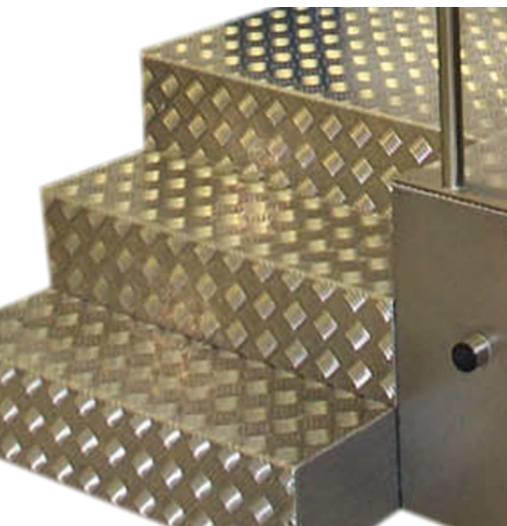
- Designed to be installed in any room
- Semi-Automatic where operative controls all aspects of recovery process
- All items washed and disinfected in hermetically sealed recovery chamber
- Left-hand or right-hand access available
- Straight, left-hand or right-hand steps available
- Manacle bar
- Easy to assemble and install
- Uses DL6 – defoamed, anti-microbial concentrate that sanitizes all recovered items



PROTECT THE HEALTH & SAFETY OF YOUR OFFICERS

Protect and prevent the spread and exposure to harmful diseases such as

Coronavirus - Hepatitis - AIDS - STD's



SOLD IN 40 COUNTRIES

TECHNICAL



WC Unit:

- Main body
- WC Bowl
- Recovery Chamber
- Automatic Dosing unit

Side Screen:

- Manufactured from stainless steel with 9mm thick laminated viewing panel

Rear Screen:

- Stainless steel frame and infill panel

Main Services Required:

- Mains Water – A minimum of 4 Bar (approx. 56psi) at a volume of 10 litres/minute
- Electricity – Mains electrical feed 110v or 240v (specify when ordering)
- Soil – Via a 2" BSP waste socket

DL6

All Drugloo units use a substance called DL6 which is an anti-microbial disinfectant specifically developed for use in Drugloo units.

NB: Minimum headroom is 2.4m

Included:

Drugloo Evolution Unit with 1 year warranty
10 Litres DL6
Shipping direct to institution
1 year access to Resource Centre

Technical Support:

Drugloo units are designed to be extremely robust, built from the highest quality components and manufactured in grade 316 stainless steel. They are also rigorously tested before shipping and you have a full 1-year manufacturer's warranty. This covers everything except misuse and/or abuse.

If there are any issues then we provide support via phone and also video link. We also have units being built in the factory all the time so can give live demonstrations.

Resource Centre:

All clients have access to -

- Information videos
- Training videos
- Technical videos
- Live workshop access



Training:

An online training video is provided via Resource Centre.

Optional – A site visit for training of appointed operatives and maintenance staff is available COVID-19 permitting.



Payment and Delivery:

14 Day from receipt of unit by electronic payment in £/\$ whichever is appropriate.

Delivery Time:

Drugloo Ranger units are often in stock so delivery time from receipt of order is usually 1-3 weeks.