

DRUGLOO

THE WORLD'S LEADING EXPERT INTERNATIONAL

Product Brochure 2023



The experts choice
for recovering banned substances

sales@drugloo-international.com

www.drugloo-international.com

CONTENTS

- INTRODUCTION
- DRUGLOO AND ASSOCIATED EQUIPMENT
- DRUGLOO COVERT
- DRUGLOO RANGER
- DRUGLOO EVOLUTION
- DL6
- INSTALLATION AND TECHNICAL SUPPORT
- ONLINE RESOURCE PORTAL

USED IN 40 COUNTRIES

ONLY MANUFACTURER WORLDWIDE

WELCOME TO THE DRUGLOO PRODUCT BROCHURE

The experts in recovering banned substances

Drugloo units are used to recover:

- Drugs
- Weapons
- Explosives
- SEMTEX
- Mobile Phones
- Sim Cards
- Diamonds
- Money
- Prisoner Keys
- Prisoner Communications

Evidence is completely washed and disinfected

The Benefits:

- Protect individuals from
 - * infectious diseases such as Hepatitis, AIDS, STD and Coronavirus
 - * Unpleasant substances
 - * Unpleasant smells
 - * Washing and processing contraband hidden in human faeces
- Recover banned substances without contamination of evidence
- Retro fit or portable units
- Easy to operate and maintain
- Manufactured from grade 316 stainless steel
- 25-year life expectancy

Already sold in 40 countries

Used by:

- Jails
- Police
- Seaports
- Secure Medical Institutions
- Penitentiaries
- Airports
- Military



DRUGLOO AND ASSOCIATED EQUIPMENT

THE PROBLEM

You have detained a person you suspect of carrying banned substances and believe that packages of these substances have been internally concealed by swallowing or rectal insertion.

You are now faced with the problem of recovering these packages in such a way as to maintain continuity of evidence for future court proceedings, whilst being aware of the threat of disease or contamination from these packages.

You also have to respect the rights of the detainee, and wish for the recovery process to be as discreet and sympathetic as possible.

THE SOLUTION

Our range of Banned Substances Recovery Equipment is designed to assist in the safe, hygienic and discreet recovery of packages of banned substances from the faeces of detainees.

Our products offer the operative the maximum amount of protection from contamination, whilst maintaining the chain of continuity of evidence. Built as a specialised toilet, the equipment enables the packages to be separated from all other unwanted debris, which is then washed away, leaving the packages to be sterilised within the equipment and discharged directly into an evidence container. The operative has no direct physical contact with anything inside the equipment, or contact with the recovered packages.

On the following pages you will find the standard range of recovery equipment we offer. But as all of the equipment is individually manufactured by ourselves, we will be pleased to discuss your particular requirements prior to production, to ensure that the equipment you choose is exactly right for your application.



CHOOSING THE CORRECT EQUIPMENT

The first step in selecting the correct equipment for your application is to determine the circumstances in which it will be used. The two most usual conditions are shown below, together with the relevant equipment type.

ATTENDED (NORMAL PROCEDURE FOR CUSTOMS ETC)

Detainee is escorted to the equipment and uses the facility whilst the officers are in attendance. The banned substances are recovered there and then.

- Drugloo Ranger



- Drugloo Evolution



NON-ATTENDED (normal procedure for prisons etc)

Detainee is left unattended in a locked cell after being arrested. The WC part of the equipment is located within the cell, and the detainee can use it at anytime, without the supervision of the custody officers. It is recommended that the unit is fitted in a cell without a wash basin to avoid the washing and re-swallowing of a passed package. The recovery chamber is located in an adjacent room, where it can be inspected at anytime.

- Drugloo Covert





DRUGLOO COVERT

Designed for being covertly installed behind a standard WC and accessible from an adjoining room or large service duct.

The design of this unit permits the WC to be used as a normal WC, but can be simply changed to intercept all items flushed down the WC. These can then be inspected and items recovered. This unit is complimented by a water pumping and sanitising unit to provide all the protection offered by the rest of the Drugloo range.

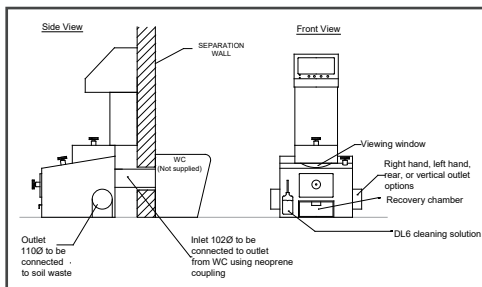
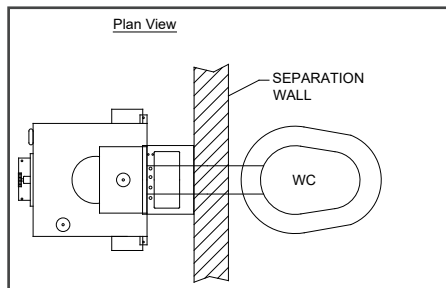
Measurements:

1220mm(H) x 400mm(W) x 500mm(D) Installed.

Note:

600mm minimum clearance is required in front of Drugloo unit to enable operation.





MAINS SERVICES REQUIRED

Mains Water

Requires a minimum pressure of 4 Bar (approx, 56psi) at a volume of 10 litres/minute.

Electricity

Mains electrical supply 110v or 240v (specify when ordering).

Soil

Via 4" waste outlet.



DRUGLOO RANGER

Portable banned substances recovery equipment

Compact enough to be transported in a light van or estate car, this equipment has built-in water and waste tanks and is battery powered. It can be easily deployed and used where no water, electrical or waste services are available.

'Hands free' washing and recovery system similar to that used in the Drugloo Evolution. This provides the maximum protection to the operative whilst allowing all the recovered items to be sterilised prior to recovery.

Measurements:

1100mm(L) x 500mm(W) x 600mm(H) (cover down)

1100mm(L) x 500mm(W) x 940mm(H) (handle height)

Weight:

Empty - 60Kg.

Full - 100Kg.

Automatic sanitising system treats incoming water to provide maximum protection to operative whilst sterilising recovered packages.

Rugged stainless steel construction.

Manacle points for feet and hands.

Handle for portability.







DRUGLOO EVOLUTION

This Drugloo is semi-automatic. All aspects of the recovery procedure are controlled from the front of the equipment. The operator can select by controls, the suitable duration and sequence of washing and retrieval of the packages. The operator does not have to manually manipulate any of the recovered substances. The interior of the recovery chamber is clearly visible at all times to maintain continuity of evidence. Packages and faeces are automatically transferred from the WC bowl into the washing/recovery chamber, and can be gently tumbled whilst being sprayed with water into which has been injected the correct amount of Anti-Microbial Concentrate via the automatic dosing unit contained within the equipment.

The equipment comprises five pre-fabricated parts, which are easily bolted together on site.

The complete equipment is manufactured from high grade stainless steel and are robust enough to withstand the abuse likely to be encountered in the environment in which it is to be installed.





STEPPED BASE UNIT

The WC unit is elevated by 500mm to provide the operator with a comfortable working height. A step unit is provided to enable the detainee to use the WC. Straight or 90° step units are available.

WC UNIT

This is the main body of the equipment comprising WC bowl, recovery chamber and automatic dosing unit. This is fully factory plumbed with external connections for water inlet, waste outlet and mains electricity.

SIDE SCREEN

Manufactured from Stainless Steel with a 9mm thick laminated glass viewing panel.

REAR SCREEN

Manufactured from Stainless Steel with Stainless Steel infill panel

MAINS SERVICES REQUIRED

Mains Water

Requires a minimum pressure of 4 Bar (approx, 56psi) at a volume of 10 litres/minute.

Electricity

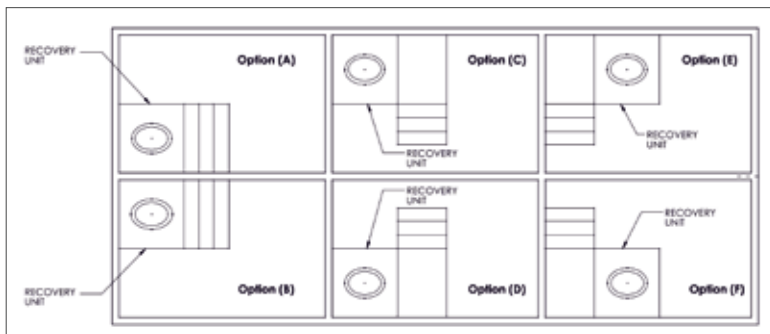
Mains electrical supply 110v or 240v (specify when ordering).

Soil

Via a 2" BSP socket.

NB: Minimum room height required is 2.6m

DRUGLOO EVOLUTION OPTIONS





DL6 ANTI-MICROBIAL CONCENTRATE

DL6 is an anti-microbial concentrate which has been especially adapted from an internationally used product to provide the low foaming characteristic required in our range of Drugloo equipment. The use of this product is recommended to provide the maximum protection to the operators whilst ensuring recovered items are sterilised. Safety data sheets available on request.



DL6 Concentrate is supplied in the following:-

Cartons of 4 x 2.5 litres - For Drugloo Covert and Evolution

Cartons of 20 x 250ml - For Drugloo Ranger

Cartons of 50 x 250ml - Hand spray bottles for external cleaning/sanitising of the equipment

Protects and prevents the spread of potentially harmful diseases and bacteria such as Hepatitis, AIDS, STD's, Coronavirus.

Completely biodegradable



GENERAL TECHNICAL INFORMATION

- **Protect officers**
- **Recover contraband safely**
- **No foul smells**
- **No risk of infections or diseases**
- **Items completely disinfected**

INSTALLATION

Fixed installation Drugloos are supplied in modular form, and are factory assembled and fully tested prior to despatch. Each modular part is easily handled and will pass through standard door openings. Both graphic and written instruction details are supplied. These instructions are easy to follow and should present no problems for local tradesmen. We offer full technical back-up by telephone, video link or email and can provide site supervision if necessary.

TRAINING

Training is available, please see our website www.drugloo-international.com for more details.

OPERATION

All models are supplied with an operators manual, with easy to follow instructions for the successful operation of the equipment. A section at the back of each manual offers basic routine maintenance advice.

WARRANTY

The equipment is covered for a period of 12 months against manufacturing defects, with full technical backup available by email or Online Portal.

CONTACT

For further information on prices and regional partners please see www.drugloo-international.com



ONLINE RESOURCE PORTAL

We provide a range of online resources to assist our clients in gaining the best use from each of their Drugloo models.

- **Video Demonstrations of each unit**
- **Operational videos**
- **Installation videos**
- **Maintenance videos**
- **Access to live workshop**

**Register to access your free online Drugloo video demonstration
sales@drugloo-international.com**



DRUGLOO COVERT



DRUGLOO EVOLUTION



DRUGLOO RANGER



HEAD OFFICE:

Drugloo International Ltd
Premier House
Telford Way
Severalls Industrial Estate
Colchester, Essex. CO4 9QP
Tel: +44 (0)1206 377300
sales@drugloo-international.com

INTERNATIONAL PARTNERS:

CANADA

SWS Detention
Unit 1 2120 Notre Dame Avenue
Winnipeg, Manitoba
R3H 0K1
Tel: 001 204 7791982
Paul Smith
paul@swsdetention.com

USA

Drugloo International USA, LLC
4600 140th Avenue North
Unit 180
Clearwater, FL33762
Tel: (727) 285-9661
sales@drugloo-international.com

USA

STVS
2595 Clyde Avenue,
STE 2
State College, PA 16801
(888) 401-7887
Barry Johnson
info@securetechvs.com